

SPC-2 Static Pressure Control repair kits

This guide contains instructions for replacing the SPC-2 display and control board.

Display kit, model KSPC2-DISPLAY

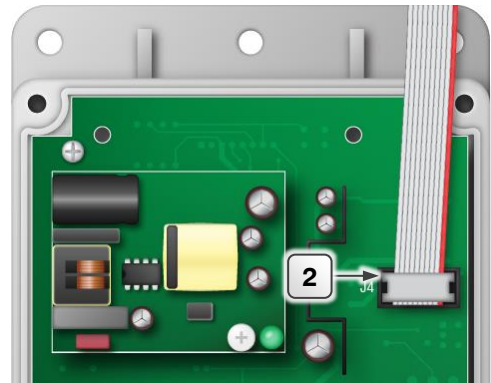
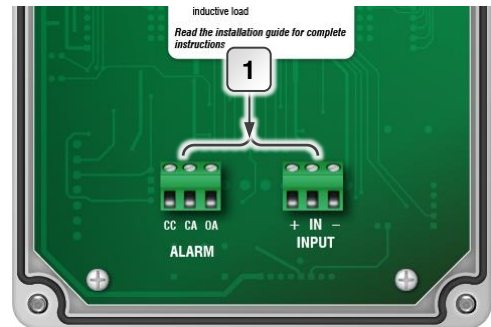
The display kit is a complete replacement display for the Static Pressure Control. Follow the instructions in the order they are listed to replace the display.



Before installing the kit or servicing the control, switch OFF the power at the source.

Removing the old display

- 1 Connection terminals:** label the wires connected to each terminal *on the display only*, and then disconnect them from the terminals.
- 2 Display connector:** disconnect the ribbon cable and remove the display. After connecting the wires to the terminals on the new display, connect the ribbon cable to the base.



Installing the new display

1. Connect the wires to the correct terminals on the new display.
2. Verify all the wires are properly connected to their correct locations.
3. Connect the ribbon cable to the socket.
4. Switch on the power to the control.
5. Reprogram the control
6. Verify the control operates properly. If it does not operate properly, check the wiring and ribbon cable connection. If the unit still will not operate properly, contact your dealer.
7. Fasten the cover to the enclosure using the four screws.

Control kit, model KSPC2-CONTROL

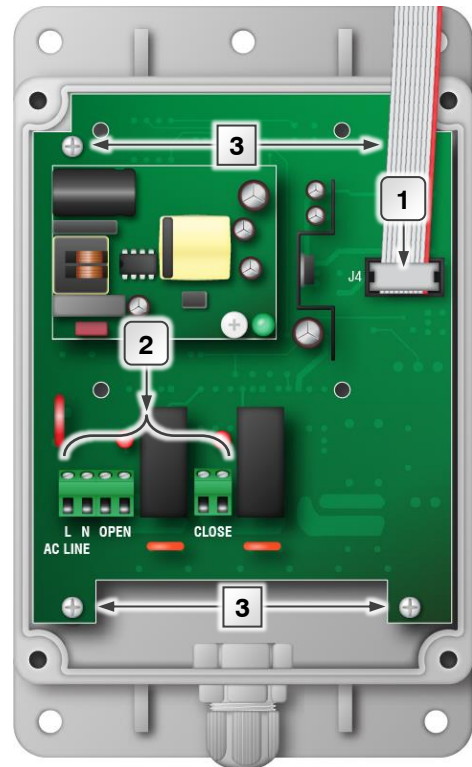
The control kit is a replacement bottom circuit board for the Static Pressure Control. Follow the instructions in the order they are listed to replace the circuit board.



Before installing the kit or servicing the control, switch OFF the power at the source.

Removing the old circuit board

- 1** **Display connector:** disconnect the ribbon cable from the display when replacing the bottom board. After replacing the board and reconnecting the wires to the terminals, reconnect the ribbon cable.
- 2** **Connection terminals:** label the wires connected to each terminal, and then disconnect them from the terminals.
- 3** **Screws:** remove the four screws to remove the circuit board from the enclosure.



Installing the new circuit board

1. Fasten the new circuit board to the enclosure using the four screws.
2. Connect the wires to their correct terminals.
3. Connect the ribbon cable.
4. Verify all the wires are properly connected to their correct locations.
5. Switch on the power to the control and verify it operates properly. If it does not operate properly, check the wiring and ribbon cable connection. If the unit still will not operate properly, contact your dealer.
6. Fasten the cover to the enclosure using the four screws.

Phason Inc.

2 Terracon Place
Winnipeg, Manitoba, Canada
R2J 4G7

Phone: 204-233-1400
Fax: 204-233-3252

E-mail: support@phason.ca
Web site: www.phason.ca